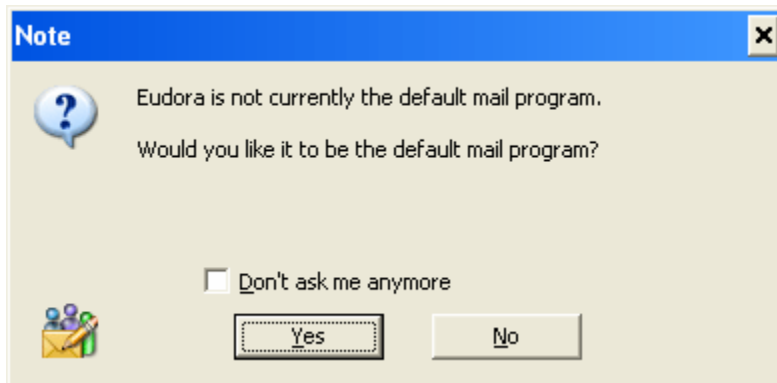
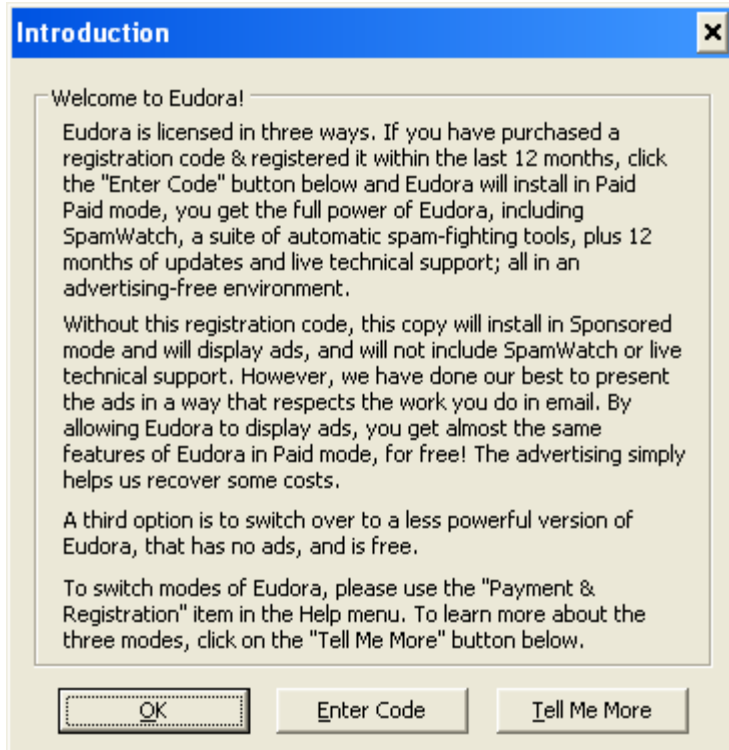


How to Setup your E-mail Account - Eudora 6.2

1 - When you **launch Eudora for the first time**, you should see this screen. You can click Yes if you're not going to use any other email program, or if you want Eudora to be your main email program.



You will see this Introduction screen dealing with the different licence modes. Just hit OK.



2 - The New Account Wizard will pop up. Click Next to begin.



3 - Choose the first option - Create a brand new email account - and click Next.



4 - Enter your display name in the Your Name box (this is the name that will be displayed in the "From" field when you send messages), then click Next.



5 - Type in your full email address (for example, username@tedata.net.eg) then click Next.



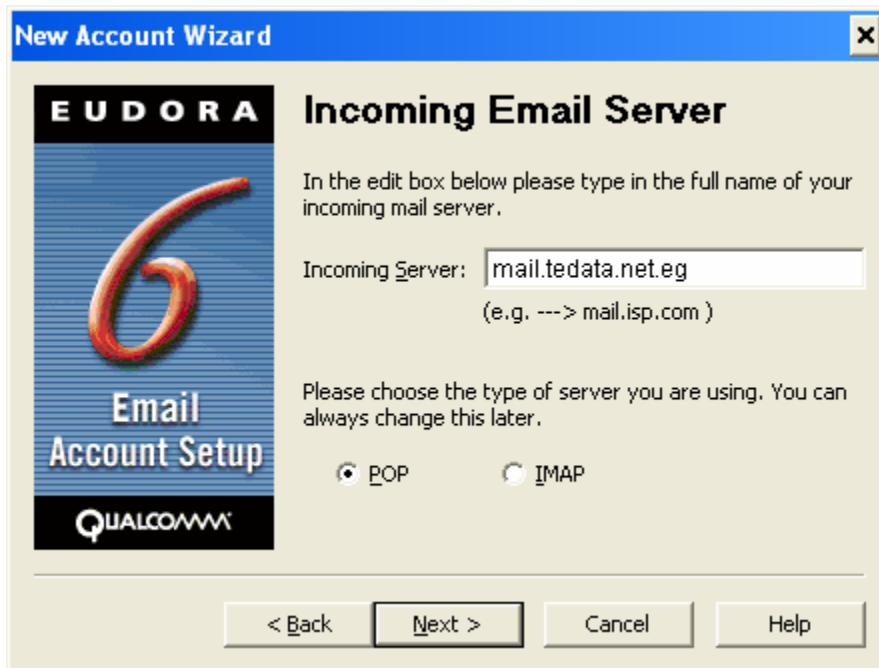
6 - Type in your username in the User Name box. **Your username is usually the first part of your TEData email address**, so if your email address is username@tedata.net.eg, then most likely your username will be username. Be careful, the TEData username is always lowercase. Click Next.



7 - In the Incoming Server box, type in: mail.tedata.net.eg

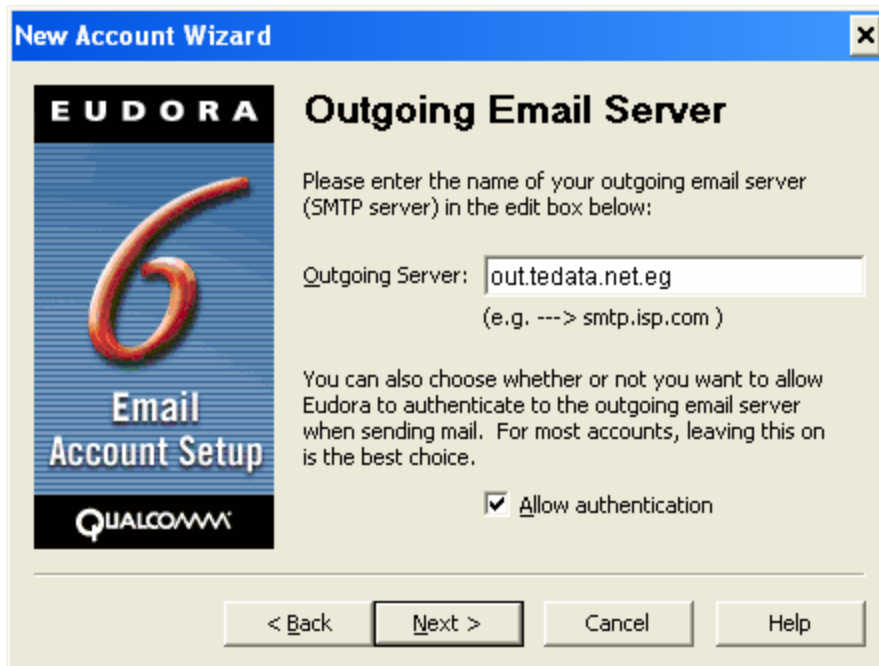
Choose POP for the type of server, unless you wish to use IMAP (both are allowed, click here for more info about the difference between POP and IMAP).

Click Next when done.



8 - For the Outgoing Server, type in: out.tedata.net.eg

Make sure the checkbox called Allow Authentication IS CHECKED (or check it if it's unchecked), then click Next.



9 - You should now see the Success! Screen. Click Finish to create the new account.



Congratulations, you have finished setting up your email account!



::: Copyright © 2007 . TE Data Support Team . All Rights Reserved :::

::: For Further Informations Call Us At 19777 :::

