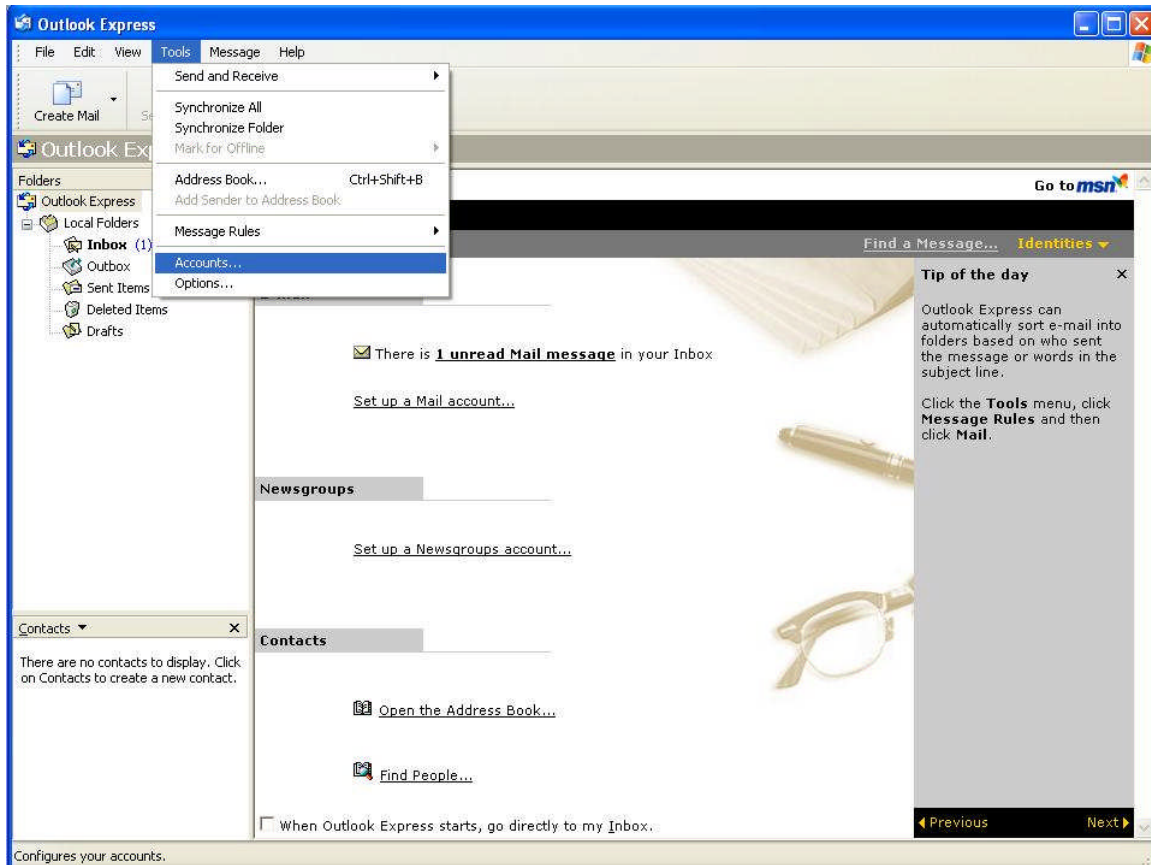
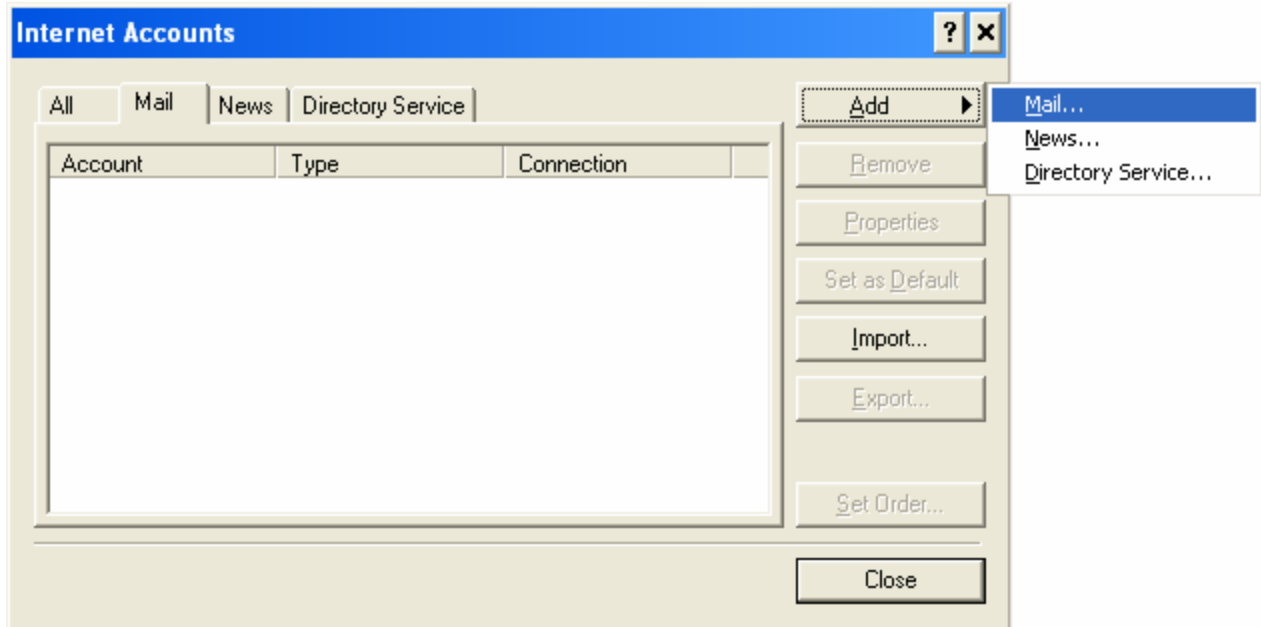


How to Setup your E-mail Account - Outlook Express

1- Open the Outlook and press tools then accounts:

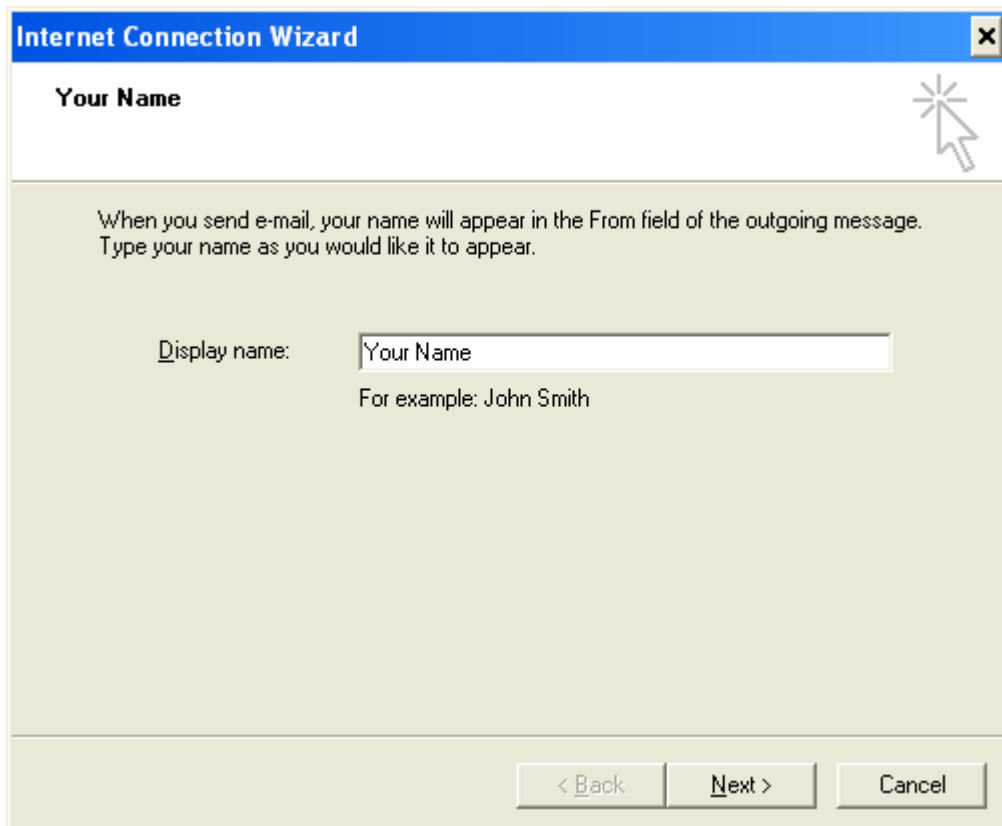


2 - Open Outlook Express, go to the Tools menu and choose Accounts:

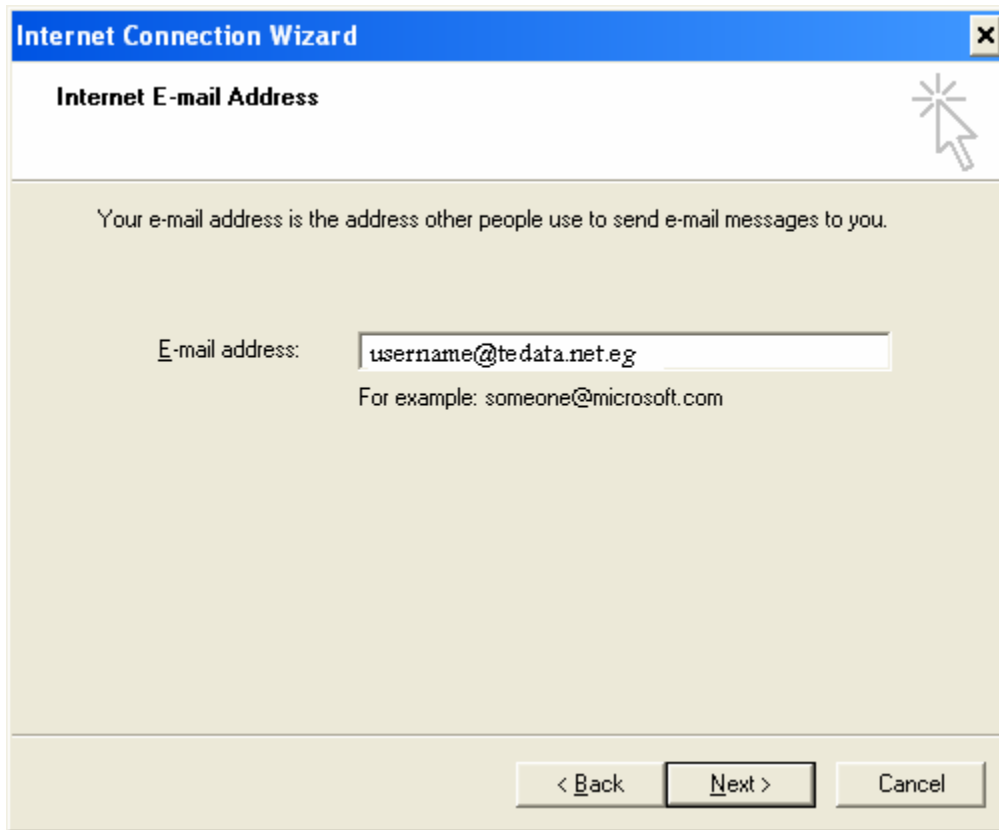


Note: if you're setting up Outlook Express for the first time, please go directly to step 3.

3 - Make sure you are on the second tab called Mail, click on the Add button in the upper right-hand corner, and select Mail:



4 - The Internet Connection Wizard window will pop-up. Please enter your **display name**, which is the name that will appear in the from field when you send e-mail. You can then click next:



The screenshot shows a window titled "Internet Connection Wizard" with a blue header bar. Below the header, the title "Internet E-mail Address" is displayed. A mouse cursor is pointing at a star icon in the top right corner. The main area contains the text: "Your e-mail address is the address other people use to send e-mail messages to you." Below this, there is a label "E-mail address:" followed by a text input field containing "username@tedata.net.eg". Underneath the input field, it says "For example: someone@microsoft.com". At the bottom of the window, there are three buttons: "< Back", "Next >", and "Cancel".

5 - Enter your **e-mail address**, and then click next:

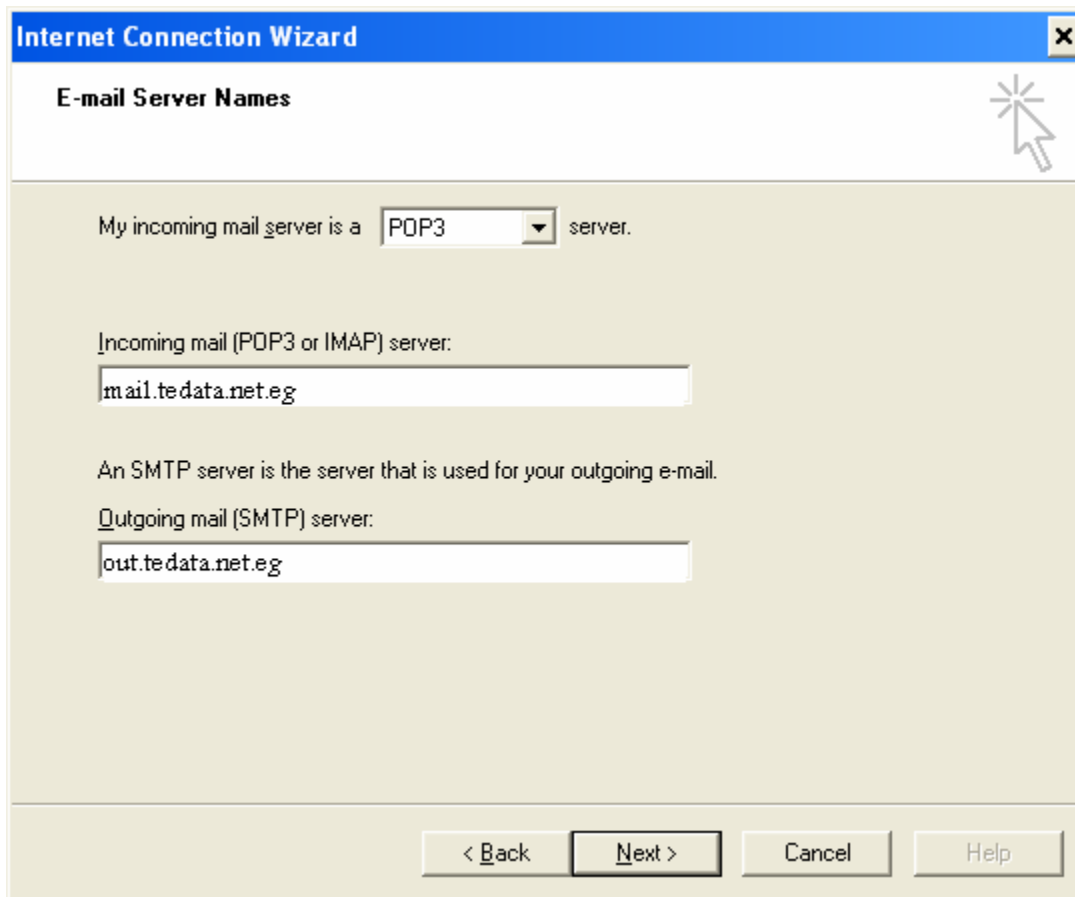
The screenshot shows a Windows dialog box titled "Internet Connection Wizard" with a sub-header "Internet Mail Logon". The main instruction reads: "Type the account name and password your Internet service provider has given you." There are two input fields: "Account name:" containing the text "username" and "Password:" containing ten black dots. Below the password field is a checked checkbox labeled "Remember password". A paragraph of text explains: "If your Internet service provider requires you to use Secure Password Authentication (SPA) to access your mail account, select the 'Log On Using Secure Password Authentication (SPA)' check box." Below this is an unchecked checkbox labeled "Log on using Secure Password Authentication (SPA)". At the bottom, there are three buttons: "< Back", "Next >", and "Cancel". A mouse cursor is pointing at the "Next >" button.

6- Choose POP3 from the drop-down box (unless you prefer to use IMAP), then enter the following information:

Incoming mail (POP3, IMAP or HTTP) server: mail.tedata.net.eg

Outgoing mail (SMTP) server: out.tedata.net.eg

You can click next.



7 - Enter your username in the Account name box (your username is usually the first part of your e-mail address at tedata.net.eg, so if your e-mail address is username@tedata.net.eg, your username should be username).

Type in your password in the next box, and make sure you do not have the Caps Lock key turned on, since your password is case sensitive (and so is your username).

Make sure Remember password is checked.

Do NOT check Log on using Secure Password Authentication (SPA).

You can now click next.

Internet Connection Wizard [X]

Internet Mail Logon [Help Icon]

Type the account name and password your Internet service provider has given you.

Account name:

Password:

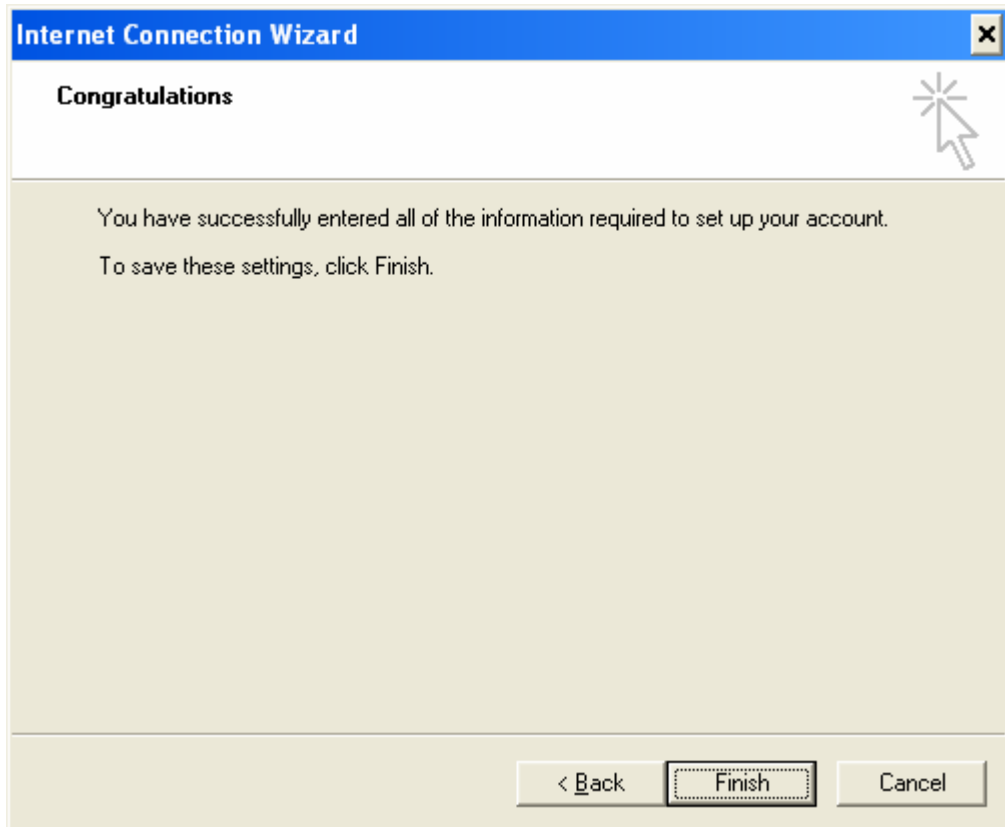
Remember password

If your Internet service provider requires you to use Secure Password Authentication (SPA) to access your mail account, select the 'Log On Using Secure Password Authentication (SPA)' check box.

Log on using Secure Password Authentication (SPA)

< Back Next > Cancel

8 - The Congratulations screen will appear. Click Finish.



9 - You should now be back on the Internet Accounts window, and see an account called mail.tedata.net.eg Please double-click on that name (mail.tedata.net.eg).

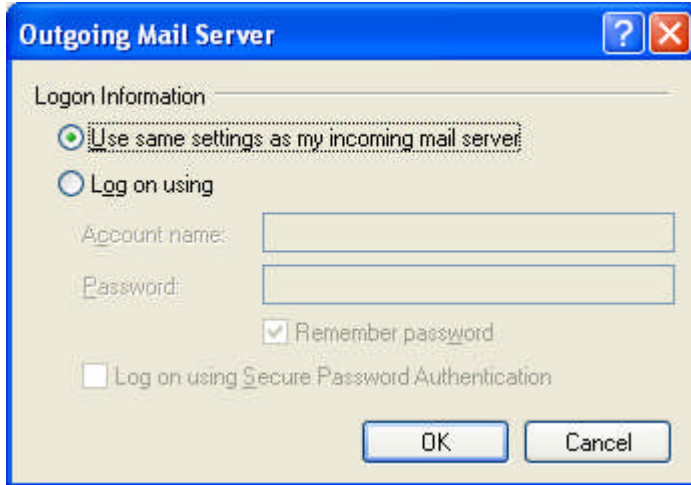


Go to the second tab called Servers.

In the lower section, you should see a checkbox called my server requires authentication. Please CHECK that box.

Now, click on the Settings button next to it.

10 - A dialog box like this one should have popped up:



Choose the first radio button called Use same setting as my incoming mail server,

Do NOT check the last box called Log on using Secure Password Authentication (SPA).

You can now click OK to confirm the changes.

This will close the current dialog box and take you back to the mail.earthnet.net Properties window. Please click OK on that window to close it.

You should now be back on the Internet Accounts window. Click the Close button to finish.

Congratulations, you have finished setting up your email account!



::: Copyright © 2007 . TE Data Support Team . All Rights Reserved :::

::: For Further Informations Call Us At 19777 :::

